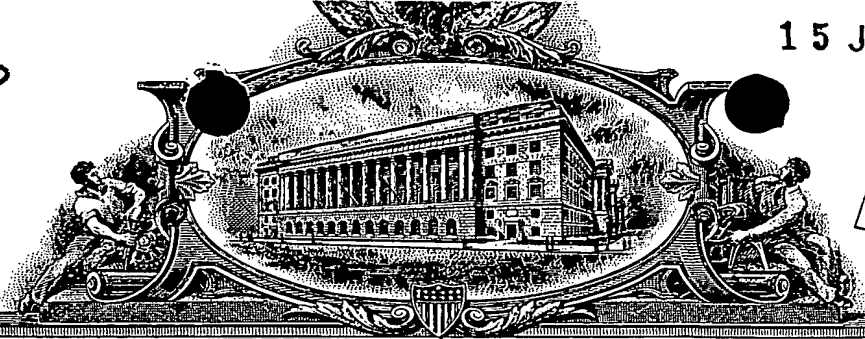


CA 00/1108

15 JAN 2001 (15.01.01)

REC'D 09 FEB 2001  
WIPO  
PCT

PA 310595



# THE UNITED STATES OF AMERICA

TO ALL TO WHOM THESE PRESENTS SHALL COME:

UNITED STATES DEPARTMENT OF COMMERCE

United States Patent and Trademark Office

4

October 12, 2000

THIS IS TO CERTIFY THAT ANNEXED HERETO IS A TRUE COPY FROM THE RECORDS OF THE UNITED STATES PATENT AND TRADEMARK OFFICE OF THOSE PAPERS OF THE BELOW IDENTIFIED PATENT APPLICATION THAT MET THE REQUIREMENTS TO BE GRANTED A FILING DATE UNDER 35 USC 111.

APPLICATION NUMBER: 09/401,868  
FILING DATE: September 23, 1999

**PRIORITY DOCUMENT**  
SUBMITTED OR TRANSMITTED IN COMPLIANCE WITH RULE 17.1(a) OR (b)

By Authority of the  
COMMISSIONER OF PATENTS AND TRADEMARKS



*P. R. Grant*  
P. R. GRANT  
Certifying Officer

Please type a plus sign (+) inside this box

Approved through 09/30/2000, OMB 0651-0032  
Patent and Trademark Office: U.S. DEPARTMENT OF COMMERCE  
Under the Paperwork Reduction Act of 1995, no persons are required to respond to a collection of information unless it displays a valid OMB control number.

Under the Paperwork Reduction Act of 1995, no persons are required to respond to a collection of information unless it displays a valid OMB control number.

# UTILITY PATENT APPLICATION TRANSMITTAL

(Only for new nonprovisional applications under 37 C.F.R. § 1.53(b))

Attorney Docket No.	555255012109
First Inventor or Application Identifier	Gilhuly et al.
Title	System & Method For Pushing Informa... tion To A Mobile Data Communication...
Express Mail Label No.	EL098131538US

**APPLICATION ELEMENTS**  
See MPEP chapter 600 concerning utility patent application contents.

**ADDRESS TO:** Assistant Commissioner for Patents  
Box Patent Application  
Washington, DC 20231

- Fee Transmittal Form (e.g., PTO/SB/17)  
(Submit an original and a duplicate for fee processing)
- Specification (Total Pages )  
(preferred arrangement set forth below)  
- Descriptive title of the invention  
- Cross References to Related Applications  
- Statement Regarding Fed sponsored R & D  
- Reference to Microfiche Appendix  
- Background of the invention  
- Brief Summary of the invention  
- Brief Description of the Drawings (if filed)  
- Detailed Description  
- Claim(s)  
- Abstract of the Disclosure
- Drawing(s) (35 U.S.C. 113) (Total Sheets )
- Oath or Declaration (Total Pages )
  - Newly executed (original or copy)
  - Copy from a prior application (37 C.F.R. § 1.63(d))  
(for continuation/divisional with Box 16 completed)
    - DELETION OF INVENTOR(S)**  
Signed statement attached deleting inventor(s) named in the prior application, see 37 C.F.R. §§ 1.63(d)(2) and 1.33(b).

- Microfiche Computer Program (Appendix)
- Nucleotide and/or Amino Acid Sequence Submission(s)  
(if applicable, all necessary)
  - Computer Readable Copy
  - Paper Copy (identical to computer copy)
  - Statement verifying identity of above copies

### ACCOMPANYING APPLICATION PARTS

- Assignment Papers (cover sheet & document(s))
- 37 C.F.R. § 3.73(b) Statement of Power of Attorney (when there is an assignee)
- English Translation Document (if applicable)
- Information Disclosure Statement (IDS)/PTO-1449
- Preliminary Amendment
- Return Receipt Postcard (MPEP 503)  
(Should be specifically itemized)
- Small Entity Statement(s) (PTO/SB/09-12)  
Statement filed in prior application, Status still proper and desired
- Certified Copy of Priority Document(s) (if foreign priority is claimed)
- Other: check

**NOTE FOR ITEMS 1 & 13:** IN ORDER TO BE ENTITLED TO PAY SMALL ENTITY FEES, A SMALL ENTITY STATEMENT IS REQUIRED (37 C.F.R. § 1.27), EXCEPT IF ONE FILED IN A PRIOR APPLICATION IS RELIED UPON (37 C.F.R. § 1.29).

16. If a CONTINUING APPLICATION, check appropriate box, and supply the requisite information below and in a preliminary amendment:
- Continuation  Divisional  Continuation-in-part (CIP) of prior application No: 09 / 087,623  
Group / Art Unit: Unknown

Prior application information: Examiner Unknown  
For CONTINUATION or DIVISIONAL APPS only: The entire disclosure of the prior application, from which an oath or declaration is supplied under Box 4b, is considered a part of the disclosure of the accompanying continuation or divisional application and is hereby incorporated by reference. The incorporation can only be relied upon when a portion has been inadvertently omitted from the submitted application parts.

### 17. CORRESPONDENCE ADDRESS

Customer Number or Bar Code Label (Insert Customer No. or Attach bar code label here) or  Correspondence address below

Name	David B. Cochran, Esq.		
	Jones, Day, Reavis & Pogue		
Address	North Point		
	901 Lakeside Avenue		
City	Cleveland	State	OH
		Zip Code	44114
Country	US	Telephone	216-586-3939
		Fax	216-579-0212

Name (Print/Type)	David B. Cochran	Registration No. (Attorney/Agent)	39,142
Signature	<i>David B. Cochran</i>	Date	9/23/99

Burden Hour Statement: This form is estimated to take 0.2 hours to complete. Time will vary depending upon the needs of the individual case. Any comments on the amount of time you are required to complete this form should be sent to the Chief Information Officer, Patent and Trademark Office, Washington, DC 20231. DO NOT SEND FEES OR COMPLETED FORMS TO THIS ADDRESS. SEND TO: Assistant Commissioner for Patents, Box Patent Application, Washington, DC 20231.

09/23/99  
fcs86 U.S. PTO

09/23/99

09/23/99  
09/23/99



# System and Method for Pushing Information from a Host System to a Mobile Data Communication Device

## BACKGROUND OF THE INVENTION

### 1. Field of the Invention

5 The present invention is directed toward the field of replicating information from a host system where the information is normally stored to a mobile data communication device. In particular, the system and method of the present invention provide an event-driven redirection computer program ("redirector program") operating at the host system, which, upon sensing a particular user-defined event has occurred, redirects user-selected data items (or parts thereof) from the host system to the user's mobile data communication device. The mobile data communication device is preferably coupled to the host system via a wireless network and one or more landline networks. Due to the bandwidth limitations of wireless networks, only a part of a user-selected data item is generally redirected to the user's mobile device, with the user given the option of then retrieving the entire data item (or some other part of the data item) from the host system.

### 2. Description of the Related Art

10 Present systems and methods for replicating information from a host system to a user's mobile data communication device are typically "synchronization" systems in which the user's data items are warehoused (or stored) at the host system for an indefinite period of time until the user synchronizes the mobile device to the host system. In these types of systems and methods, when replication of the warehoused data items to the mobile device is desired, the user typically places the mobile device in an interface cradle that is electrically connected to the host system via some form of local, dedicated communication, such as a serial cable or an infrared or other type of wireless link. Software executing on the mobile data communication device then



## SUMMARY OF THE INVENTION

5 A system and method for pushing information from a host system to a mobile data communication device upon sensing a triggering event is provided. A redirector program operating at the host system enables a user to continuously redirect certain user-selected data items from the host system to the user's mobile data communication device upon detecting that one or more user-defined triggering events has occurred. The redirector program operates in connection with event generating applications and repackaging systems at the host system to configure and detect a particular user-defined event, and then to repackage the user-selected data items in an electronic wrapper prior to pushing the data items to the mobile device.

Using the redirector program, the user can select certain data items for redirection, such as E-mail messages, calendar events, meeting notifications, address entries, journal entries, personal reminders etc. Having selected the data items for redirection, the user can then configure one or more event triggers to be sensed by the redirector program, which then initiates redirection of the user data items upon sensing one or more of the event triggers. These user-defined trigger points (or event triggers) may be external events, internal events or networked events. Once an event has triggered redirection of the user data items, the host system then repackages these items in a manner that is transparent to the mobile data communication device, so that information on the mobile device appears similar to information on the user's host system.

20 The redirector program also provides a set of software-implemented control functions for determining the type of mobile data communication device and its address, for programming a preferred list of message types that are to be redirected, and for determining whether the mobile device can receive and process certain types of message attachments, such as word processor or



The primary advantage of the present invention is that it provides a system and method for triggering the continuous and real-time redirection of user-selected data items from a host system to a mobile data communication device. Other advantages of the present invention include: (1) flexibility in defining the types of user data to redirect, and in defining a preferred list of message types that are to be redirected or preferred senders whose messages are to be redirected; (2) flexibility in configuring the system to respond to numerous internal, external and networked triggering events; (3) transparent repackaging of the user data items in a variety of ways such that the mobile data communication device appears as though it were the host system; (4) integration with other host system components such as E-mail, TCP/IP, keyboard, screen saver, Web pages and certain programs that can either create user data items or be configured to provide trigger points; and (5) the ability to operate locally on a user's desktop system or at a distance via a network server or through a secure Internet connection.

These are just a few of the many advantages of the present invention, as described in more detail below. As will be appreciated, the invention is capable of other and different embodiments, and its several details are capable of modifications in various respects, all without departing from the spirit of the invention. Accordingly, the drawings and description of the preferred embodiments set forth below are to be regarded as illustrative in nature and not restrictive.

#### BRIEF DESCRIPTION OF THE DRAWINGS

The present invention satisfies the needs noted above as will become apparent from the following description when read in conjunction with the accompanying drawings wherein:



FIG. 1 is a system diagram showing the redirection of user data items from a user's desktop PC (host system) to the user's mobile data communication device, where the redirector software is operating at the user's desktop PC;

FIG. 2 is a system diagram showing the redirection of user data items from a network server (host system) to the user's mobile data communication device, where the redirector software is operating at the server;

FIG. 3 is a block diagram showing the interaction of the redirector software with other components of the host system in FIG. 1 (the user's desktop PC) to enable the pushing of information from the host system to the user's mobile data communication device;

FIG. 4 is a flow chart showing the steps carried out by the redirector software operating at the host system;

FIG. 5 is a flow chart showing the steps carried out by the mobile data communication device to interface with the redirector software operating at the host system;

FIG. 6 is a system diagram showing the redirection of user data items from a user's host system to the user's mobile data communication device, where the redirector software is operating at the wireless redirector host system;

FIG. 7 is a block diagram showing the interaction of the redirector software with other components of the host system in FIG. 6 to enable the pushing of information from the host system to the user's mobile data communications device; and

FIG. 8 is a flow chart showing the steps carried out by the redirector software operating at the wireless redirector host system.

10  
20  
30  
40  
50  
60  
70  
80  
90  
100  
110  
120  
130  
140  
150  
160  
170  
180  
190  
200

## DETAILED DESCRIPTION OF THE DRAWINGS

Referring now to the drawings, FIG. 1 is an example system diagram showing the redirection of user data items (such as message A or C) from a user's desktop PC (host system) 10A to the user's mobile data communication device 24, where the redirector software 12 is operating at the user's PC 10A. As used in this application, the term "host system" refers to the computer where the redirector software is operating. In the preferred embodiment, the host system is a user's desktop PC 10A. Alternatively, however, the host system could be a network server (10B, see FIG. 2) connected to the user's PC via a local-area network ("LAN"), or it could be a Web server (240, see FIG. 6) operating through a secure network connection or operating at an external ISP, or the host system could be any other system that is capable of communicating with the user's desktop PC.

Message A in FIG. 1 represents an internal message sent from desktop 26 to the user's host system 10A via LAN 14. Message C in FIG. 1 represents an external message from a sender that is not directly connected to LAN 14, such as the user's mobile data communication device 24, some other user's mobile device (not shown), or any user connected to the Internet 18. Message C also represents a command message from the user's mobile data communication device 24 to the host system 10A. As described in more detail in FIG. 3, the desktop host system 10A preferably includes, along with the typical hardware and software associated with a workstation or desktop computer, the redirector program 12, a TCP/IP subsystem 42, a primary message store 40, an E-mail subsystem 44, a screen saver subsystem 48, and a keyboard subsystem 46.

In FIG. 1, the host system 10A is the user's desktop system, typically located in the user's office. The desktop host system 10A is connected to a LAN 14, which also connects to other

computers 26, 28 that may be in the user's office or elsewhere. The LAN 14, in turn, is connected to a wide area network ("WAN") 18, preferably the Internet, which is defined by the use of the Transmission Control Protocol/Internet Protocol ("TCP/IP") to exchange information, but which, alternatively, could be any other type of WAN. The connection of the LAN 14 to the

5 WAN 18 is via high bandwidth link 16, typically a T1 or T3 connection. The WAN 18 in turn is connected to a variety of gateways 20, via connections 32. A gateway forms a connection or bridge between the WAN 18 and some other type of network, such as an RF wireless network, cellular network, satellite network, or other synchronous or asynchronous land-line connection.

In the example of FIG. 1, a wireless gateway 20 is connected to the Internet for communicating via wireless link 22 to a plurality of wireless mobile data communication devices 24. Also shown in FIG. 1 is machine 30, which could be a FAX machine, a printer, a system for displaying images (such as video) or a machine capable of processing and playing audio files, such as a voice mail system.

The present invention includes the ability to redirect certain message attachments to such an external machine 30 if the redirector program configuration data reflects that the mobile device 24 cannot receive and process the attachments, or if the user has specified that certain attachments are not to be forwarded to mobile device 24, even if such device can process those attachments. By way of example, consider an E-mail sent to a user that includes three attachments -- a word processing document, a video clip and an audio clip. The redirection program 12 could be configured to send the text of the E-mail to the remote device 24, to send the word processing document to a networked printer located near the user, to send the video clip to a memory store accessible through a secure connection through the internet and to send the audio clip to the user's voice mail system. This example is not intended to limit the breadth and

scope of the invention, but rather to illustrate the variety of possibilities embodied in the redirection concept.

5 The preferred mobile data communication device 24 is a hand-held two-way wireless paging computer, a wirelessly enabled palm-top computer, a mobile telephone with data messaging capabilities, or a wirelessly enabled laptop computer, but could, alternatively be other types of mobile data communication devices capable of sending and receiving messages via a network connection 22. Although it is preferable for the system to operate in a two-way communications mode, certain aspects of the invention could be beneficially used in a "one and one-half" or acknowledgment paging environment, or even with a one-way paging system. The mobile data communication device 24 includes software program instructions that work in conjunction with the redirector program 12 to enable the seamless, transparent redirection of user-selected data items. FIG. 4 describes the basic method steps of the redirector program 12, and FIG. 5 describes the steps of the corresponding program operating at the mobile device 24.

10  
20  
30  
40  
50  
60  
70  
80  
90  
100  
110  
120  
130  
140  
150  
160  
170  
180  
190  
200

In an alternative embodiment of the present invention, not explicitly shown in the drawings, the mobile device 24 also includes a redirector program. In this embodiment, user selected data items can be replicated from the host to the mobile device and vice versa. The configuration and operation of the mobile device 24 having a redirector program is similar to that described herein with respect to FIGs. 1-4.

20 A user of the present invention can configure the redirector program 12 to push certain user-selected data items to the user's mobile data communication device 24 when the redirector 12 detects that a particular user-defined event trigger (or trigger point) has taken place. User-selected data items preferably include E-mail messages, calendar events, meeting notifications, address entries, journal entries, personal alerts, alarms, warnings, stock quotes, news bulletins,

etc. Alternatively, the user-selected data items could include any other type of message that is transmitted to the host system 10A, or that the host system 10A acquires through the use of intelligent agents, such as data that is received after the host system 10A initiates a search of a database, a Web site or a bulletin board. In some instances, only a portion of the data item is transmitted to the mobile device 24 in order to minimize the amount of data transmitted via the wireless network 22. In these instances, the mobile device 24 can optionally send a command message (C) to the host system 10A to retrieve more or all of the data item if the user desires to receive it.

The user-defined event triggers include external events, internal events and networked events. External events preferably include: (1) receiving a command message (such as message C) from the user's mobile data communication device to begin redirection, or to execute some other command at the host, such as a command to enable the "preferred list mode" (described below), or to add or subtract a particular sender from the preferred list of the preferred list mode; (2) receiving a similar message from some external computer; and (3) sensing that the user is no longer in the vicinity of the host system; although, alternatively, an external event can be any other detectable occurrence that is external to the host system 10.

Internal events may include a calendar alarm, screen saver activation, keyboard timeout, programmable timer, or any other user-defined event that is internal to the host system 10. Networked events are user-defined messages that are transmitted to the host system from another computer coupled to the host system 10A via a network to initiate redirection. These are just some of the event triggers that could be used with the present invention to initiate replication of the user-selected data items from the host system 10A to the mobile device 24. Other types of triggers are also within the scope of the present invention.

FIG. 1 shows an E-mail message A being communicated over LAN 14 from computer 26 to the user's desktop system 10A (also shown in FIG. 1 is an external message C, which could be an E-mail message from an Internet user, or could be a command message from the user's mobile device 24). Once the message A (or C) reaches the primary message store of the host system 10A, it can be detected and acted upon by the redirection software 12. The redirection software 12 can use many methods of detecting new messages. The preferred method of detecting new messages is using Microsoft's @ Messaging API ("MAPI"), in which programs, such as the redirector program 12, register for notifications or 'advise syncs' when changes to a mailbox take place. Other methods of detecting new messages could also be used.

Assuming that the redirector program 12 is activated, and has been configured by the user (either through the sensing of an internal, external, or networked event) to replicate certain user data items (including messages of type A or C) to the mobile device 24, when the message A is received at the host system 10A, the redirector program 12 detects its presence and prepares the message for redirection to the mobile device 24. In preparing the message for redirection, the redirector program 12 may compress the original message A, it may just compress the message header, or it may encrypt the entire message A to create a secure link to the mobile device 24.

The address of the user's mobile data communication device 24, the type of device, and whether the device 24 can accept certain types of attachments, such as word processing or voice attachments, are also programmed into the redirector 12. If the user's type of mobile device cannot accept a particular type of attachments, then the redirector 12 can be programmed to route those attachments to a fax or voice number where the user is located using an attached fax or voice machine 30.

FIG. 1  
FIG. 2  
FIG. 3  
FIG. 4  
FIG. 5  
FIG. 6  
FIG. 7  
FIG. 8  
FIG. 9  
FIG. 10  
FIG. 11  
FIG. 12  
FIG. 13  
FIG. 14  
FIG. 15  
FIG. 16  
FIG. 17  
FIG. 18  
FIG. 19  
FIG. 20  
FIG. 21  
FIG. 22  
FIG. 23  
FIG. 24  
FIG. 25  
FIG. 26  
FIG. 27  
FIG. 28  
FIG. 29  
FIG. 30  
FIG. 31  
FIG. 32  
FIG. 33  
FIG. 34  
FIG. 35  
FIG. 36  
FIG. 37  
FIG. 38  
FIG. 39  
FIG. 40  
FIG. 41  
FIG. 42  
FIG. 43  
FIG. 44  
FIG. 45  
FIG. 46  
FIG. 47  
FIG. 48  
FIG. 49  
FIG. 50  
FIG. 51  
FIG. 52  
FIG. 53  
FIG. 54  
FIG. 55  
FIG. 56  
FIG. 57  
FIG. 58  
FIG. 59  
FIG. 60  
FIG. 61  
FIG. 62  
FIG. 63  
FIG. 64  
FIG. 65  
FIG. 66  
FIG. 67  
FIG. 68  
FIG. 69  
FIG. 70  
FIG. 71  
FIG. 72  
FIG. 73  
FIG. 74  
FIG. 75  
FIG. 76  
FIG. 77  
FIG. 78  
FIG. 79  
FIG. 80  
FIG. 81  
FIG. 82  
FIG. 83  
FIG. 84  
FIG. 85  
FIG. 86  
FIG. 87  
FIG. 88  
FIG. 89  
FIG. 90  
FIG. 91  
FIG. 92  
FIG. 93  
FIG. 94  
FIG. 95  
FIG. 96  
FIG. 97  
FIG. 98  
FIG. 99  
FIG. 100

5

The redirector 12 may also be programmed with a "preferred list mode" operation that is configured by the user either at the host system 10A, or remotely from the user's mobile data communication device 24 by transmitting a command message C. The "preferred list" in the "preferred list mode" contains a list of senders (other users) whose messages are to be redirected, or it may contain a list of message characteristics that determine whether a message is to be

redirected, or it may contain both a list of senders and a list of message characteristics. For example, a message characteristic may relate to the size of the message, or the type of message, or whether the message has any attachments, or whether the message is originating from a particular domain. If activated, the preferred list mode causes the redirector program 12 to operate like a filter, only redirecting certain user data items based on whether the data item was sent from a sender on the preferred list or has certain message characteristics that if present will trigger or suppress redirection of the message.

20

In the example of FIG. 1, if desktop system 26 was operated by a user on the preferred list of host system 10A, and the preferred list option was activated, then message A would be redirected. If, however, desktop 26 was operated by a user not on the host system's preferred list, then message A would not be redirected, even if the user of the host system had configured the redirector to push messages of type A. The user of the host system 10A can configure the preferred list directly from the desktop system 10A, or, alternatively, the user can send a command message (such as C) from the mobile device 24 to the desktop system 10A to activate the preferred list mode, or to add or delete certain senders or message characteristics from the previously configured preferred list. In this manner, the user can remotely control the operation of the preferred list mode filter so as to dynamically alter the filtering characteristics of the redirector program 12.

After the redirector 12 has determined that a particular message should be redirected, and it has prepared that message for redirection, the software 12 then sends the message A to a secondary memory store located in the mobile device 24. In doing so, the redirector preferably repackages message A as an E-mail with an outer envelope B that contains the addressing information of the mobile device 24, although alternative repackaging techniques and protocols could be used, such as a TCP/IP repackaging and delivery method (most commonly used in the alternative server configuration shown in FIG. 2). The wireless gateway 20 requires this outer envelope information B in order to know where to send the redirected message A. Once the message (A in B) is received by the mobile device 24, the outer envelope B is removed, and the original message A is placed in the secondary memory store within the mobile device 24. By repackaging and removing the outer envelope in this manner, the present invention causes the mobile computer 24 to appear to be at the same physical location as the host system 10, thus creating a transparent system.

In the case where message C is representative of an external message from a computer on the Internet 18 to the host system 10A, and the host 10A has been configured to redirect messages of type C, then in a similar manner to message A, message C would be repackaged with an outer envelope B and transmitted to the user's mobile device 24. In the case where message C is representative of a command message from the user's mobile device 24 to the host system 10A, the command message C is not redirected, but is acted upon by the host system 10A.

If the redirected user data item is an E-mail message, as described above, the user at the mobile device 24 sees the original subject, sender's address, destination address, carbon copy and blind carbon copy information. When the user replies to this message, or when the user authors a





mobile device, and the user's preferred list, if any. The event triggers are preferably detected at the user's desktop system 26, 28 and can be any of the internal, external or networked events listed above. The desktop systems 26, 28 preferably detect these events and then transmit a message to the server host computer 10B via LAN 14 to initiate redirection. Although the user data items are preferably stored at the server host computer 10B in this embodiment, they could, alternatively, be stored at each user's desktop system 26, 28, which would then transmit them to the server computer 10B after an event has triggered redirection.

As shown in FIG. 2, desktop system 26 generates a message A that is transmitted to and stored at the host system 10B, which is the network server operating the redirector program 12. The message A is for desktop system 28, but in this embodiment, user messages are stored at the network server 10B. When an event occurs at desktop system 28, an event trigger is generated and transmitted to the network server 10B, which then determines who the trigger is from, whether that desktop 28 has redirection capabilities, and if so, the server 10B (operating the redirector program 12) uses the stored configuration information to redirect message A to the mobile computer 24 associated with the user of desktop system 28.

As described above with reference to FIG. 1, message C could be either a command message from a user's mobile data communication device 24, or it could be a message from an external computer, such as a computer connected to the Internet 18. If the message C is from an Internet computer to the user's desktop system 28, and the user has redirection capabilities, then the server 10B detects the message C, repackages it using electronic envelope B, and redirects the repackaged message (C in B) to the user's mobile device 24. If the message C is a command message from the user's mobile device 24, then the server host computer 10B simply acts upon the command message using the redirector program 12.

Turning now to FIG. 3, a block diagram is set forth that demonstrates the interaction of the redirector software 12 with additional components of the desktop host system 10A shown in FIG. 1 (i.e., the desktop PC) to enable more fully the pushing of information from the host system 10A to the user's mobile data communication device 24. These additional components are illustrative of the type of event-generating systems that can be configured and used with the redirector software 12, and of the type of repackaging systems that can be used to interface with the mobile communication device 24 to make it appear transparent to the user.

The desktop host system 10A is connected to LAN 14, and can send and receive data, messages, signals, event triggers, etc., to and from other systems connected to the LAN 14. Through the LAN, the system 10A can also communicate with external networks 18, 22, such as the Internet or a wireless data network. In addition to the standard hardware, operating system, and application programs associated with a typical microcomputer or workstation, the desktop system 10A includes the redirector program 12, a TCP/IP sub-system 42, an E-mail sub-system 44, a primary data storage device 40, a screen saver sub-system 48, and a keyboard sub-system 46. The TCP/IP and E-mail subsystems 42, 44 are examples of repackaging systems that can be used to achieve the transparency of the present invention, and the screen saver and keyboard subsystems 46, 48 are examples of event generating systems that can be configured to generate event messages or signals that trigger redirection of the user selected data items.

The method steps carried out by the redirector program 12 are described in more detail in FIG. 4. The basic functions of this program are: (1) to configure and setup the user-defined event trigger points that will start redirection; (2) to configure the types of user data items for redirection and optionally configure a preferred list of senders whose messages are to be redirected; (3) to configure the type and capabilities of the user's mobile data communication



other function. The functionality of the E-Mail sub-system 44 is controlled by the redirector program 12.

The TCP/IP sub-system 42 is an alternative repackaging system. It includes all of the functionality of the E-Mail sub-system 44, but instead of repackaging the user-selected data items as standard E-mail messages, this system 42 repackages the data items using special-purpose TCP/IP packaging techniques. This type of special-purpose sub-system is useful in situations where security and improved speed are important to the user. The provision of a special-purpose wrapper that can only be removed by special software on the mobile device 24 provides added security, and by bypassing E-mail store and forward systems, the speed of delivery of messages can be improved.

As described previously, the present invention can be triggered to begin redirection upon detecting numerous external, internal and networked events, or trigger points. Examples of external events include: receiving a command message from the user's mobile data communication device 24 to begin redirection; receiving a similar message from some external computer; sensing that the user is no longer in the vicinity of the host system; or any other event that is external to the host system. Internal events could be a calendar alarm, screen saver activation, keyboard timeout, programmable timer, or any other user-defined event that is internal to the host system. Networked events are user-defined messages that are transmitted to the host system from another computer that is connected to the host system via a network to initiate redirection.

The screen saver and keyboard sub-systems 46, 48 are examples of systems that are capable of generating internal events. Functionally, the redirector program 12 provides the user with the ability to configure the screen saver and keyboard systems so that under certain



5

necessary to enable redirection for a particular desktop system 26, 28 connected to the server 10B, including: (1) setting up a profile for the desktop system 26, 28 indicating its address, events that will trigger redirection, and the data items that are to be redirected upon detecting an event; (2) maintaining a storage area at the server 10B for the data items; and (3) storing the type of data communication device 24 to which the desktop system's data items are to be redirected, whether and what type of attachments the device 24 is capable of receiving and processing, and

the address of the mobile device 24.

80  
85  
90  
95  
100  
105  
110  
115  
120  
125  
130  
135  
140  
145  
150  
155  
160  
165  
170  
175  
180  
185  
190  
195  
200

Once the redirector program is configured 50, the trigger points (or event triggers) are enabled at step 52. The program 12 then waits 56 for messages and signals 54 to begin the redirection process. A message could be an E-Mail message or some other user data item that may have been selected for redirection, and a signal could be a trigger signal, or could be some other type of signal that has not been configured as an event trigger. When a message or signal is detected, the program determines 58 whether it is one of the trigger events that has been configured by the user to signal redirection. If so, then at step 60 a trigger flag is set, indicating that subsequently received user data items (in the form of messages) that have been selected for redirection should be pushed to the user's mobile data communication device 24.

20

If the message or signal 54 is not a trigger event, the program then determines at steps 62, 68 and 66 whether the message is, respectively, a system alarm 62, an E-Mail message 64, or some other type of information that has been selected for redirection. If the message or signal is none of these three items, then control returns to step 56, where the redirector waits for additional messages 54 to act upon. If, however the message is one of these three types of information, then the program 12 determines, at step 68, whether the trigger flag has been set, indicating that the user wants these items redirected to the mobile device 24. If the trigger flag is set, then at

5

step 70, the redirector 12 causes the repackaging system (E-Mail or TCP/IP) to add the outer envelope to the user data item, and at step 72 the repackaged data item is then redirected to the user's mobile data communication device 24 via LAN 14, WAN 18, wireless gateway 20 and wireless network 22. Control then returns to step 56 where the program waits for additional messages and signals to act upon.

Although not shown explicitly in FIG. 4, after step 68 the program could, if operating in the preferred list mode, determine whether the sender of a particular data item is on the preferred list, and if not, then the program would skip over steps 70 and 72 and proceed directly back to step 56. If the sender is on the preferred list, then control returns to steps 70 and 72 for repackaging and transmission of the message from the preferred list sender to the mobile device 24.

FIG. 5 sets forth the method steps carried out by the user's mobile data communication device 24 in order to interface to the redirector program 12 of the present invention. At step 80, the mobile software is started and the mobile device 24 is configured to operate with the system of the present invention, including, for example, storing the address of the user's desktop system 10A.

20

At step 82, the mobile device waits for messages and signals 84 to be generated or received. Assuming that the redirector software 12 operating at the user's desktop system 10A is configured to redirect upon receiving a message from the user's mobile device 24, then at step 86 the user can decide to generate a command message that will start redirection at the host system 10A. If the user does so, then at step 88 the redirection message is composed and sent to the desktop system 10A via the wireless network 22, through the wireless gateway 20, via the Internet 18 to the LAN 14, and is finally routed to the desktop machine 10A.



In this situation where the mobile device 24 is sending a message directly to the desktop system 10A, no outer wrapper is added to the message (such as message C in FIGs. 1 and 2). In addition to the redirection signal, the mobile device 24 could transmit any number of other commands to control the operation of the host system 10A, and in particular the redirector program 12. For example, the mobile 24 could transmit a command to put the host system 10A into the preferred list mode state, and then could transmit additional commands to add or subtract certain senders or certain message characteristics from the preferred list. In this manner, the mobile device 24 can dynamically limit the amount of information being redirected to it by altering the preferred list.

Other example commands include: (1) a message to change the configuration of the host system 10A to enable the mobile device 24 to receive and process certain attachments; and (2) a message to instruct the host system 10A to redirect an entire data item to the mobile device 24 in the situation where only a portion of a particular data item has been previously redirected.

Turning back to FIG. 5, if the user signal or message is not a direct message to the desktop system 10A to begin redirection (or some other command), then control is passed to step 90, which determines if a message has been received. If a message is received by the mobile, and it is a message from the user's desktop 10A, as determined at step 92, then at step 94 a desktop redirection flag is set "on" for this message, and control passes to step 96 where the outer envelope is removed. Following step 96, or in the situation where the message is not from the user's desktop 10A, as determined at step 92, control passes to step 98, which displays the message for the user on the mobile device's display. The mobile unit 24 then returns to step 82 and waits for additional messages or signals.

If the mobile device 24 determines that a message has not been received at step 90, then control passes to step 100, where the mobile 24 determines whether there is a message to send. If not, then the mobile unit returns to step 82 and waits for additional messages or signals. If there is at least one message to send, then at step 102 the mobile 24 determines whether it is a  
5 reply message to a message that was received by the mobile unit. If the message to send is a reply message, then at step 108, the mobile 24 determines whether the desktop redirection flag is

on for this message. If the redirection flag is not on, then at step 106 the reply message is simply transmitted from the mobile device 24 to the destination address via the wireless network 22. If, however, the redirection flag is on, then at step 110 the reply message is repackaged with the outer envelope having the addressing information of the user's desktop system 10A, and the repackaged message is then transmitted to the desktop system 10A at step 106. As described above, the redirector program 12 executing at the desktop system then strips the outer envelope and routes the reply message to the appropriate destination address using the address of the desktop system 10A as the "from" field, so that to the recipient of the redirected message, it appears as though it originated from the user's desktop system rather than the mobile data communication device.

If, at step 102, the mobile 24 determines that the message is not a reply message, but an  
20 original message, then control passes to step 104, where the mobile 24 determines if the user is using the redirector software 12 at the desktop system 10A, by checking the mobile unit's configuration. If the user is not using the redirector software 12, then the message is simply transmitted to the destination address at step 106. If, however, the mobile determines that the user is using the redirector software 12 at the desktop system 10A, then control passes to step 110, where the outer envelope is added to the message. The repackaged original message is then

transmitted to the desktop system 10A at step 106, which, as described previously, strips the outer envelope and routes the message to the correct destination. Following transmission of the message at step 106, control of the mobile 24 returns to step 82 and waits for additional messages or signals.

5

Now with reference to FIGs. 6-8, there will be described an alternative two-host Internet-based system using many of the features of the system described in the network-based host system 10B configuration shown in FIG. 2. In the system shown in FIGs. 6-8, however, instead of a single host system 10B for storing the user's messages and for operating the redirector program 12, there are two hosts, a messaging host 230, where the user's data items are stored, and a wireless redirector host system 240, where a wireless redirector program 242 operates. These two host system are preferably coupled together via the Internet 218. The wireless redirector program 242 is similar in many respects to the redirector program 12 described above, but is configured for communicating with a wireless gateway 260 coupled to a wireless data network 222.

10  
15  
20  
25  
30  
35  
40  
45  
50  
55  
60  
65  
70  
75  
80  
85  
90  
95  
100

20

With reference to FIG. 6, there is shown an example system diagram showing the redirection of user data items, such as message A, from user A's desktop PC 204 to user B's mobile data communication device 220, or alternatively, message B from user B's mobile communication device 220 to user A. In this example, the messaging host system 230 maintains and stores data items received from the Internet 218 for user B in a message inbox. In this particular system example, the messaging host system 230 is preferably an Internet Service Provider ("ISP") that provides connectivity to the Internet 218 for a plurality of users, including user B. In another embodiment of the present invention, the messaging host 230 may be a web-based E-mail hosting service such as MSN Hotmail™ or a variety of other known web-based E-

mail hosting systems. In another embodiment of the invention, the E-mail hosting service supplies a strictly wireless solution.

In this embodiment of the invention, the messaging host system 230 is configured so as to forward a copy of all incoming data items destined for user B's inbox to a second host referred to herein as a wireless redirector host system 240. The wireless redirector host system 240 includes the wireless redirector program 242. Advantageously, data items destined for a user of the messaging host system 230 having a mobile communication device are continuously "pushed" to the wireless redirector host system 240 as they arrive at the messaging host system 230. Upon arrival at the redirector host system 240, a wireless redirector software program 242 operating at the system 240 determines whether such data items are user-selected data items to be pushed via a wireless network 222 to the user's mobile communications device 220. In this manner, user-selected data items are advantageously pushed out to the mobile communication device 220 contemporaneously as they arrive to the messaging host system 230 so that the user need not be concerned about delays in receiving user-selected data items on the user's mobile communication device 220.

The wireless redirector host system 240 acts primarily as a gateway for data items received from the Internet 218 and those specific data items that have been user pre-selected to be redirected (via filtering rules to be described later) to the user's mobile communications device via the wireless network 222. These filtering rules are similar to the "preferred list mode" operation described above with respect to the systems shown in FIGs. 1 and 2.

Message A in FIG. 6 represents a data item, such as an E-mail message, sent from user A's desktop PC 204 having user B as the recipient. Because user B has a mailbox on the

messaging host system 230, the message A will be directed via the Internet to the host system 230. The flow of this message A is shown in a single solid line 206.

5 Message B in FIG. 6 represents an external message created on and sent from user B's mobile data communications device 220 having user A as a recipient. Alternatively, message B also may represent a command message from user B's mobile data communication device 220 to the wireless redirector host system 240. The flow of this message B is shown in a single dashed line 258.

As described in more detail in FIG. 7, the wireless redirector host system 240 preferably includes, along with the typical hardware and software associated with an Internet gateway, the wireless redirector software 242 which includes a mail handler, preferably a sendmail daemon (not shown), a local delivery agent (not shown), a plurality of wireless mail stores 248 (preferably one for each mobile user such as user B), a filter database 250, and a mobile user profile database 254.

Also as described in more detail in FIG. 7, the messaging host system 230 is preferably a Unix system that includes a sendmail daemon 232, a ".forward" file 238, and a memory storage area 236 for storing the data items of certain user's that are having messages redirected to their mobile data communication devices 220.

20 Referring now to FIGs. 6 and 7, the two-host system invention will first be described by way of example with reference to message A. FIG. 6 shows an E-mail message A being communicated over the Internet 218 from user A's desktop PC 204 destined for user B's inbox, which is located on the messaging host system 230. Once the message A reaches a mail handler 252 at the messaging host 230, such as a sendmail daemon 232 in the preferred embodiment, it can be detected and acted upon by this system 230.





5

useful during instances where user B is at his desktop PC 202 and accessing his inbox of the local store 236 and desires that the redirection of incoming mail to his mobile device 220 to be temporarily deactivated. The following criteria are exemplary of the types of filtering rules that may be available to the user: sender(s); how addressed (To, CC, BCC); subject keyword(s); message keyword(s); and importance (high, low, normal).

In any event, the filtering agent 250 is preferably hosted by the wireless redirector host system 240, but may be hosted by alternative host systems, including the messaging host system 230 so long as the redirector program 242 has access to the most current set of rules and can make a determination whether any particular data item has satisfied all user-defined filtering rules. Alternatively implemented, the filtering agent 250 may be combined with the user profile database 254. Data items that do not clear the filtering rules are marked as "handled" by the redirector program 242 in the wireless data item store 248, and are not further handled by the redirector 242.

B) User Profile

20

Also accessible by the redirector program 242 is the address of the user's mobile data communication device 220, the user's SMTP address, the type of device 220, and whether the device 220 can accept certain types of attachments, such as word processing or voice attachments. This information is preferably maintained in a user profile database 254 (see, FIG. 7). Such user information may be preferably created, updated and removed via a web-based user administration page 256. Web page 256 is preferably access-restricted to the system administrator of the messaging host system 230 who may from time to time add new users to the wireless redirection service. In addition to the above user information, the system administrator preferably has a switch control feature on the web page 256 to deactivate or activate redirection of the data items from the host system 230 that takes precedence over the user's selection on web

662530 "0507016



page 252. This, advantageously, allows the system administrator to maintain control over the value-added service described herein.

If the user's type of mobile device 220 cannot accept certain types of attachments, then the redirector program 242 can be programmed to route the attachments to a fax or voice number where the user is located. The user may provide such information details to the redirector program 242 via a return message created at the mobile device 220.

Advantageously, the web pages 252, 256 for configuring the filtering and user administration information used by the system preferably require that each user or host administrator login with a password before accessing the pages 252, 256. In addition, the web pages 252, 256 are preferably designed with an interface look-and-feel that is similar to the user's ISP or web-based E-mail host system. In this manner, the messaging host system 230 can be seen to be delivering a wireless E-mail solution with its traditional services.

C) Redirection

After the redirector program 242 has determined that a particular message should be redirected, and it has prepared the message for redirection, the software 242 preferably converts the message from MIME to CMIME (MIME is a standard Internet mail format, and CMIME is a compressed version of MIME), and then sends the message A to a memory store located in the mobile communications device 220 via the wireless gateway 250 and the wireless data network 222. In doing so, the redirector program 242 preferably packages message A as a message with an outer envelope A' that contains the addressing information of the mobile device 220. In the preferred embodiment, the outer envelope is GME. The wireless gateway 260 requires this outer envelope information A' in order to know where to send the redirected message A. Once the repackaged message (message A in A') is received by the mobile device 220, the outer envelope A' is removed, and the original message A is placed in the second memory store within the

mobile device 220. By removing the outer envelope A' and presenting to the user of mobile device 220 message A, the present invention causes the mobile device 220 to appear to be at the same physical location as the messaging host system 230, or PC 202 in a transparent, seamlessly integrated Internet account hosted by messaging host system 230.

5 D) Outgoing Data Item From Mobile

If the redirected user data item is an E-mail message, as described above, then the user at the mobile device 220 sees the original subject line, sender's address, destination address, and carbon copy address. Preferably and desirably, the redirection of the E-mail message A is transparent to the mobile communication device user. When the user, at the mobile device 220, replies to message A, or when the user authors a new message (a reply or a new message collectively referred to as "message B"), the software operating at the mobile device 220 adds a similar outer envelope (message B') to the reply message B (or the new message B) to cause message B to be routed to the wireless redirector host system 240 via the wireless network 222, which then removes the outer envelope B', repackages message B as message B'', and redirects message B'' to the final destination, such as user A's PC desktop 204.

The general flow of such transmission is shown as a dotted line in FIG. 6. In this embodiment of the invention, the removal of the outer envelope B' and repackaging of message B as envelope B'' results in the outgoing redirected message B'' from the wireless redirector host system 240 being sent using the E-mail address of the user's mailbox on messaging host system 230, rather than the address of the mobile device 220, so that it appears to the recipient of the message B'' that the message originated from the user's desktop system 202 or from the messaging host system 230 itself (as would be the case of a web-based E-mail hosting system) rather than the mobile data communication device 220. This transparency functionality is accomplished by the redirector 242 modifying the "from" and "reply to" identifiers associated

662220 883746

with the message B to now have the SMTP address of user B's messaging host system 230 E-mail account. Advantageously, any replies to the message B'' will then be sent to user B's inbox on messaging host system 230, which, if it is still in redirector mode, will repackage the reply and resend it to user B's mobile data device 220, as described above.

5

In this embodiment, a copy of message B (labelled B''') is redirected to user B's inbox at messaging host system 230 for retrieval and access by user B at some later time -- for recording keeping purposes. In doing so, the redirector program 242 preferably repackages message B as message B''' so as to now have modified addressing information. In this preferred instance, the modified addressing information would include changing the "from" header information to read something to the following effect: "Sent from mobile communications device to recipient" where 'recipient' would be the recipient's address of message B''. This message B''' is forwarded, preferably via the Internet 218, to the messaging host system 230.

to  
the  
data  
store  
236

20

As shown in FIG. 7, the messaging host system is preferably configured as an ISP. Here, the ISP system 230 includes a mail handler, such as a sendmail daemon 232, which forwards the copy B''' to the local data item store 236 by a local delivery agent (not shown). Further, user B may preferably configure his local inbox of data items at the desktop 202 to store such copy messages in a specific inbox for mobile data communications device data items. Of course in this illustrative example, messaging host system 230 is configured to redirect all incoming data items to wireless redirector host system 240; therefore, sendmail 232 would detect a new message and the ".forward" file 238 would again be accessed and the forwarding information therein acted upon. Consequently, message B''' is redirected (not shown) to redirector host system 240. At the redirector host system 240, the redirector is preferably programmed to detect that such a message B''' is only a redirection of message B'' sent therefrom. As such, the

redirector ignores this re-redirected message by preferably marking such messages as handled. Alternatively, the mail handler 232 at the messaging host system 230 is configured to detect such messages and to not redirect such messages.

It is to be understood that a plurality of messaging host systems 230 may use a single redirector host system 240 for redirection of users' E-mail messages. Further still, a single redirector program 242 may be used to service the plurality of messaging host systems 230.

Finally, turning to FIG. 8, a flow chart is set forth showing the steps carried out by the redirector program 242 operating at the redirector host system 240 shown in FIGs. 6 and 7. The basic steps carried out by the mobile communications device 220 in order to interface with the redirector host system 240 may be accomplished by substantially the same steps as shown in FIG. 5, although modified for this two-host aspect of the invention.

The flow chart in FIG. 8 assumes that the redirector program 242 has been activated and is operating. Additional configuration steps will be necessary to enable redirection services for a new messaging host system 230. These additional configuration steps include: (1) setting up a profile for the new messaging host system 230 indicating its address, etc. (2) setting up individual user profiles, (3) initiating default filtering rules for incoming messages from the messaging host system for the users, and (4) making available both the filtering rule 252 and user profile 256 web pages. The flow chart also assumes the necessary steps have been undertaken to configure the messaging host system 230 to forward a copy of all incoming messages to the redirector host system 240 (*i.e.*, the Unix ".forward" file has been properly configured.)

Once the messaging host system 230 is configured 268 and the redirector program 242 is configured 270, the program 242 then waits for data items at step 272. As discussed earlier, data

items need not be limited to E-mail messages but may also include signals that are representative of user profile changes or filtering rule changes.

When a data item is detected, the program determines at steps 274, 276 and 278 whether the data item is, respectively, a user profile change 274, a message from the Internet 276, or a message from the wireless mobile device 278. If the data item is a user profile change, then the appropriate user profile change is made at 280. Control then returns to step 272 where the program waits for additional data items. If the data item is a message from the Internet, then the appropriate user profile information is checked and applied at step 290. The program then checks if the filter rules have changed at step 292. If so, the filter rules are reloaded. Next, the filter rules are applied at step 296. If the message does not clear all applicable redirection filter rules at step 297, the preparation and redirection steps 298 and 300, respectively, are skipped. The message is thus ignored and control is returned to the redirector program 242 at step 272. Assuming, however, that the message (or at least a portion thereof) is to be redirected, then the message is prepared for redirection at step 298. In the preparation step 298, the redirector program 242 adds the outer envelope to the message for wireless transmission. At step 300, the repackaged message is then forwarded to the user's mobile device 220 via LAN 258, wireless gateway 260 and wireless network 222. Control then returns to step 272 where the program waits for additional data items to act upon.

If, at step 278, there is a determination that the data item is a message from the mobile device 220, then the message is prepared for Internet redirection at step 284. Preparation would preferably include changing the "from" and "reply to" fields of the message to replicate the address of the user's SMTP address at the messaging host system 230 – the resulting message referred to as message B" in FIG. 6. Also, the preparation step may include making a second

copy of the message, such message referred to as message B''' in FIG. 6. In this second copy, the "from" field is changed to, preferably, "Sent from the mobile device to Recipient" where 'Recipient' is the SMTP address of the recipient of message B''. At step 286, previous messages or attachments are preferably appended. At step 288, one message is forwarded to the recipient (message B'') and the copy of the message (message B''') is forwarded to the user's messaging host system 230 destined for the user's local data item store 236 for record keeping purposes.

Control then returns to step 272, where the program waits for additional data items to act upon. If, at step 278, there is a determination that the data item is not a message from the wireless device, other functions may be performed by the redirector program 242 if so programmed to do so. For instance, the message could be a command message such as described earlier in this application where additional text of the E-mail message not previously transmitted to the device 220 may now be transmitted in its entirety.

Although not explicitly shown in the flowchart, if at step 276 there is a determination that the message is from the Internet, then the redirector program 242 would check whether the message is a re-redirection message from the messaging host system 230. If so, all-subsequent steps are skipped (the message is ignored) and control is returned to step 272. In this manner, re-redirection messages are not redirected to the mobile device 220. Alternatively implemented, this determination could be undertaken at step 296 as part of the default filtering rules. It is to be understood that the user profile and filtering rules could alternatively be combined together, thus eliminating a step(s). This is, of course, well within the scope of the present invention.

Although not shown, the additional step of maintaining the wireless data item store 248 is another step(s) that the redirector would preferably manage. At a predetermined storage







5. The method of claim 1, further comprising the steps of:  
forwarding a copy of the new data item to the user's inbox on the messaging host system.

6. The method of claim 1, further comprising the steps of:  
5 configuring a set of filtering rules for use by the redirector host system in determining  
whether the new data item should be redirected to the user's mobile device; and

providing an access mechanism that allows the user to remotely configure and  
reconfigure the filtering rules.

7. The method of claim 1, further comprising the steps of:  
configuring a user profile database for use by the redirector host system in determining  
whether the new data item should be redirected to the user's mobile data device; and  
providing an access mechanism that allows a system administrator of the messaging host  
system to remotely configure and reconfigure the user profile database.

8. The method of claim 1, further comprising the steps of:  
receiving the electronic envelope at the user's mobile device;  
extracting the new data item from the electronic envelope; and  
storing the new data item within the memory of the mobile device.

9. The method of claim 1, further comprising the steps of:  
20 preparing a reply data item at the mobile device that is related to the new data item;

packaging the reply data item into an electronic envelope and transmitting the electronic envelope to the redirector host system.

10. The method of claim 9, wherein the electronic envelope is addressed using the electronic address of the redirector host system.

11. The method of claim 10, further comprising the steps of:  
extracting the reply data item from the electronic envelope at the redirector host system;  
reconfiguring the addressing information associated with the reply data item; and  
transmitting the reconfigured reply data item to the messaging host system.

12. The method of claim 11, further comprising the steps of:  
receiving the reconfigured reply data item at the messaging host system; and  
storing the reply data item in a user's inbox coupled to the messaging host system.

13. The method of claim 10, further comprising the steps of:  
extracting the reply data item from the electronic envelope at the redirector host system;  
reconfiguring the addressing information associated with the reply data item; and  
transmitting the reconfigured reply data item to a destination system using an electronic address included in the reply data item.

14. The method of claim 1, further comprising the steps of:  
providing the user's mobile device with an interface to a wireless data network;



19. The method of claim 1, wherein the data items are E-mail messages, and the messaging host system is an E-mail host system.

20. The method of claim 1, wherein the user's mobile device is a laptop computer.

5

21. The method of claim 1, wherein the user's mobile device is a two-way paging computer.

22. The method of claim 21, wherein the two-way paging computer includes a wireless network interface for communicating with the redirector host system via a wireless data network.

23. The method of claim 22, wherein the redirector host system is coupled to the wireless data network via a wireless gateway system.

24. The method of claim 23, wherein the electronic envelope is addressed using the wireless data network address of the two-way paging computer.

25. The method of claim 1, wherein the messaging host system is an Internet Service Provider.

26. The method of claim 25, wherein the data items are E-mail messages, and the Internet Service Provider includes a mail server program.

665260-0504020





36. The method of claim 35, wherein the interface mechanism is a web page interface.

37. The method of claim 36, wherein the web page interface includes an  
5 activation/deactivation switch for turning on/off the operation of the wireless redirector host  
system for a particular user.

38. The method of claim 34, further comprising the step of:  
accessing a user profile database coupled to the wireless redirector host system to verify  
that the user associated with the E-mail message is an authorized user.

39. The method of claim 38, further comprising the step of:  
providing an access mechanism that allows a system administrator of the messaging host  
system to remotely configure and reconfigure the user profile database.

40. The method of claim 34, wherein the messaging host system is an Internet Service  
Provider (ISP).

41. The method of claim 40, wherein the ISP and the wireless redirector host system  
20 communicate via the Internet.

42. The method of claim 34, wherein the wireless redirector host system and the wireless mobile device communicate through a wireless gateway system and a wireless communication network.

5 43. A system for redirecting data items from a network to a user's wireless mobile device, comprising:

a messaging host system coupled to the network for receiving data items associated with a particular user and for forwarding the received data items to a predetermined address on the network; and

a redirector host system associated with the predetermined address for receiving the forwarded data items from the messaging host system and for redirecting those data items to the user's wireless mobile device.

44. The system of claim 43, wherein the network is the Internet.

45. The system of claim 43, wherein the messaging host system further includes:  
a sendmail program for receiving and transmitting user data items; and  
a forwarding file containing a list of authorized user's of the system, and the predetermined address to which the messaging host system will forward each user's data items.

20 46. The system of claim 45, wherein the messaging host system further includes a local data store for storing the data items of user's having accounts on the messaging host system.





52. The system of claim 51, further comprising:  
an interface document coupled to the filter rules database for enabling the remote configuration of the filtering rules for a particular user.

5 53. The system of claim 52, wherein the interface document is a web page.

54. A method of operating a host system configured to redirect E-mail messages from the Internet to a user's wireless mobile device, comprising the steps of:  
receiving an E-mail message from the Internet for a particular user;  
accessing a user profile database to determine whether the particular user is an authorized user of the host system;  
if the user is an authorized user, then accessing a filter rules database to apply a set of user-defined filtering rules to the E-mail message that dictate whether the E-mail message is the type of message that the user wants to have redirected to its wireless mobile device; and  
if the E-mail message clears the filtering rules, then repackaging the E-mail message into an electronic envelope including the address of the user's wireless mobile device and forwarding the electronic envelope to a wireless gateway system for transmission onto a wireless data network associated with the user's wireless mobile device.

66260" 0527076

20



IN THE UNITED STATES PATENT AND TRADEMARK OFFICE

Applicant: Research In Motion Limited  
Serial No.: Not Yet Assigned  
[Continuation-In-Part of Serial No. 09/987,623, filed 5/29/98]  
Filed: Herewith

Title: SYSTEM AND METHOD FOR PUSHING INFORMATION FROM A  
HOST SYSTEM TO A MOBILE DATA COMMUNICATION DEVICE

Docket No. 555255012109

Assistant Commissioner for Patents  
Washington, D. C. 20231

**VERIFIED STATEMENT CLAIMING SMALL ENTITY STATUS**

Sir:

I hereby declare that I am an officer of the concern identified below and am empowered to act on its behalf.

The concern qualifies as a small business concern as defined in 37 C.F.R. § 1.9 for purposes of paying reduced fees, in that the number of employees thereof, including those of its affiliates, does not exceed 500 persons.

The exclusive rights to the invention described and claimed in the above-identified application have been conveyed to and remain with the concern, or if the rights are not exclusive, all other rights belong to small entities as defined in 37 C.F.R. § 1.9.

I acknowledge the duty to file, in this application, notification of any change in status resulting in loss of entitlement to small entity status prior to paying, or at the time of paying, the earliest of the issue fee or any maintenance fee due after the date on which status as a small entity is no longer appropriate.


I hereby declare that all statements made herein of my own knowledge are true and that all statements made on information and belief are believed to be true; and further that these statements were made with the knowledge that willful false statements and the like so made are punishable by fine or imprisonment, or both, under Section 1001 of Title 18 of the United States Code, and that such

09/987,623-855255012109

willful false statements may jeopardize the validity of the application, any patent issuing thereon, or any patent to which this verified statement is directed.

RESEARCH IN MOTION LIMITED

By:

  
Charles B. Meyer  
Vice President, Corporate Secretary

Date:

9/24/99

"Express Mail" Mailing Label No. EL098131538US

Date of Deposit 9-23-99

I hereby certify that this paper or fee is being deposited with the United States Postal Service Express Mail Post Office to insure service under 37 CFR 1.53 on the date indicated above and is addressed to: Assistant Commissioner for Patents, Washington, D.C.

By Deborah A. Satoran

662260 0907060









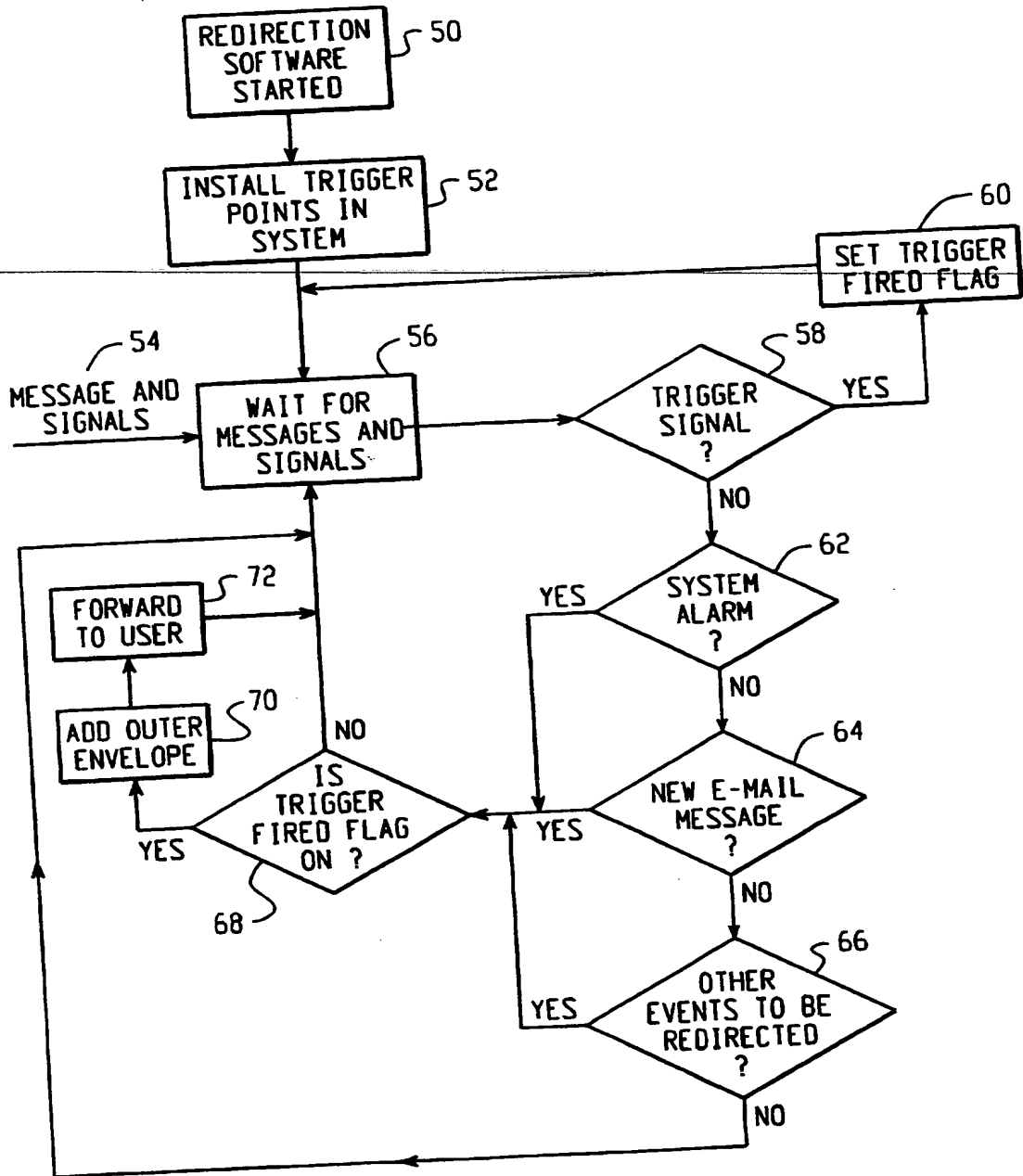


Fig. 4



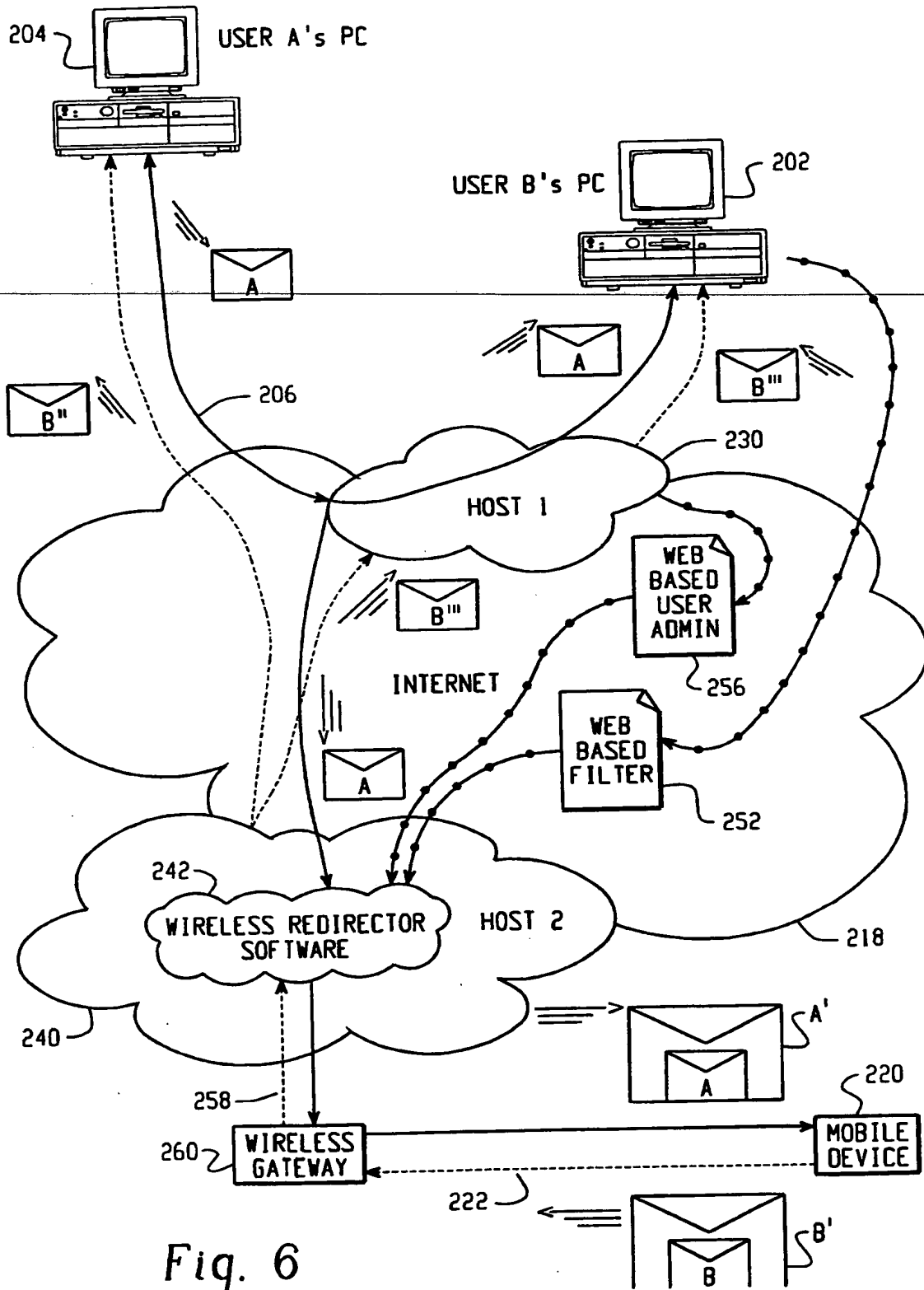


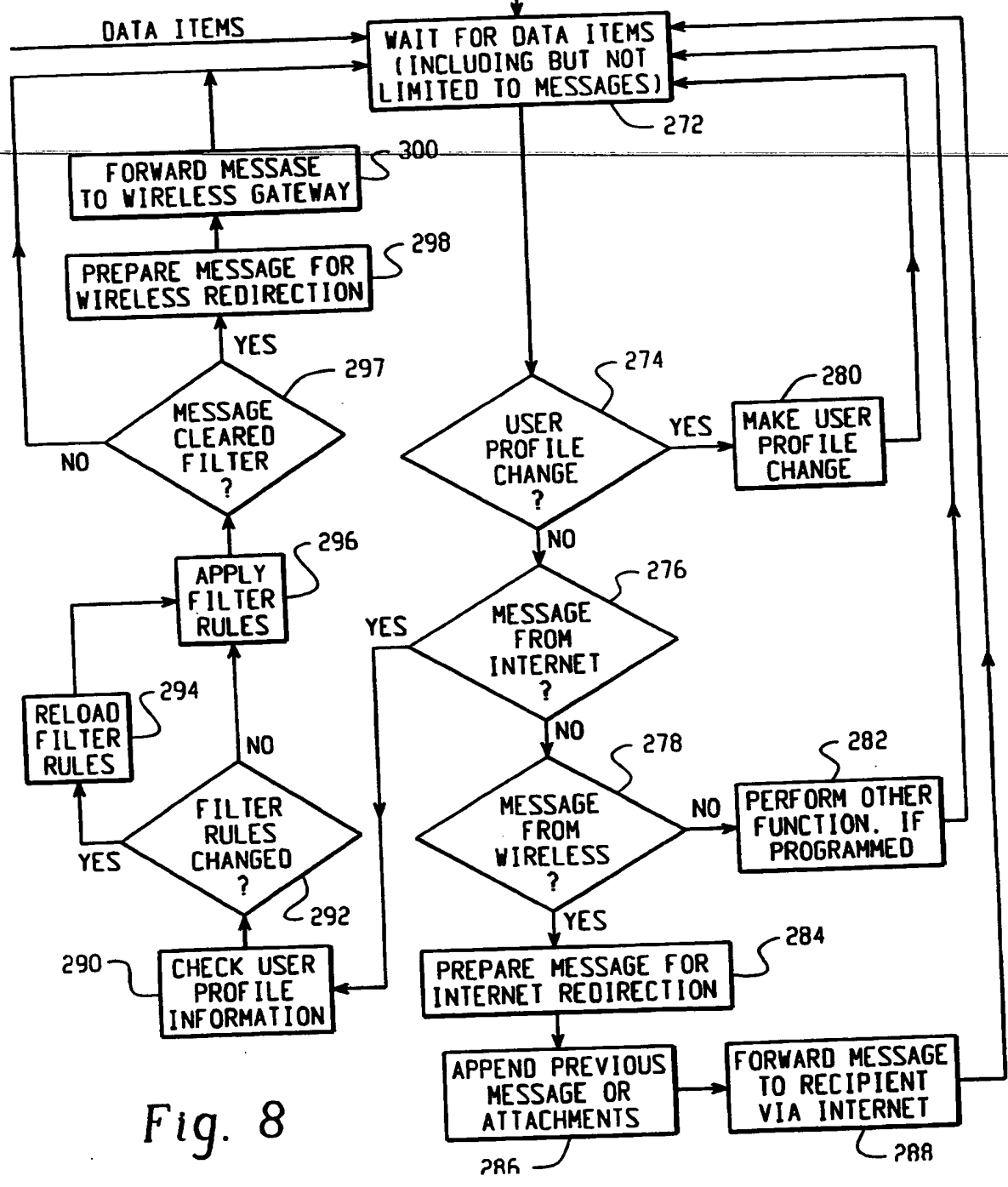
Fig. 6

66260" 89870166



HOST SYSTEM CONFIGURED FOR REDIRECTION OF INCOMING DATA ITEMS

REDIRECTOR SOFTWARE STARTED AND CONFIGURED 270



66250" 09270160

Fig. 8

**THIS PAGE BLANK (USPTO)**